

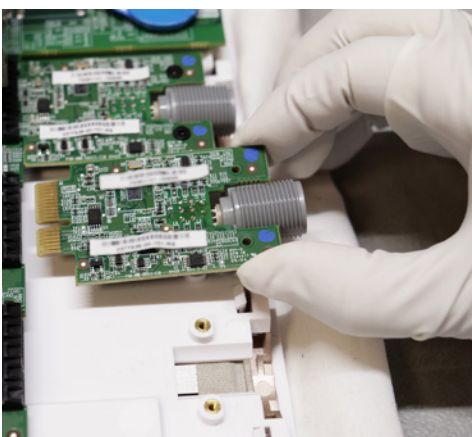
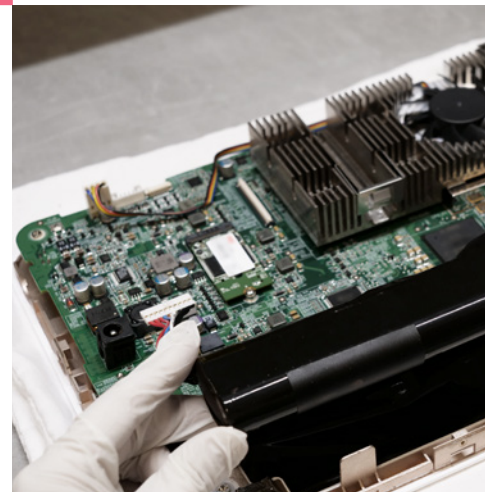


SPARE PART KITS

aView™ 2 Advance

To extend the lifetime of your aView 2 Advance monitor, Ambu has a range of spare-part kits available to your hospital.

The kits come with a comprehensive manual, which provides step-by-step illustrations that guide your biomedical engineers through the process of replacing parts as needed. In this way, you can ensure that the monitor is ready for procedures, without driving up hospitals' costs.



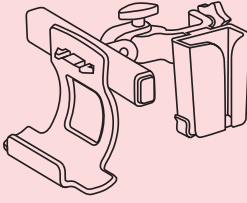
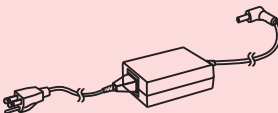
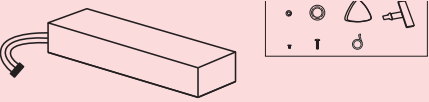

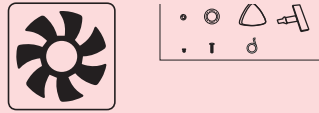
BATTERY KIT

FAN KIT


VDI KIT

ORDERING INFORMATION

Spare part kits for aView 2 Advance (item number 405011000/405011000EUC1/405011000EUC2)

SPARE PART	DESCRIPTION	ITEM NUMBER
	aView™ 2 Advance Bracket	405013100
	aView™ 2 Advance Power Supply Kit	405015400
	aView™ 2 Advance Battery Kit	405012100
	aView™ 2 Advance Visualization Device Interface (VDI) Kit	Blue: 405014100 Grey: 405000503 Green: 405000502
	aView™ 2 Advance Fan Kit	405016100

DOCUMENTATION

DOCUMENTATION	DESCRIPTION	ITEM NUMBER
	aView™ 2 Advance Spare Part Replacement Manual	Included with spare parts and available on ambu.co.uk

AMBU LIMITED

Incubator 2, Alconbury Weald Enterprise Campus | Alconbury Weald | Cambridgeshire | PE28 4XA | United Kingdom

www.ambu.co.uk