



TRAINING PROSPECTUS



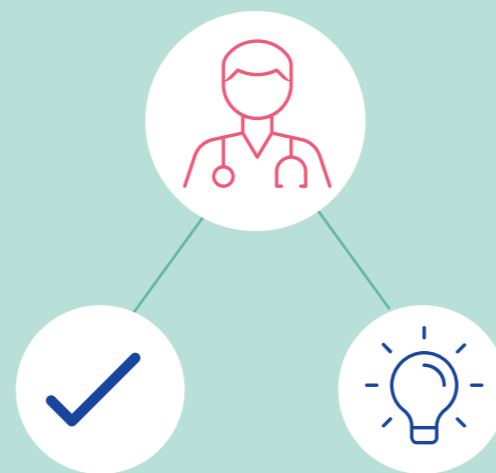
Ambu



AMBU FOR YOU - TRAINING

Since launching the world's first single-use endoscope in 2009, we've pursued our mission to bring guaranteed sterility, immediate availability and cost-effectiveness to hospitals around the world, and ultimately to improve patient care and save lives.

Our innovative range is complemented by free, industry-leading training, to ensure our users are confident with our products and can work safely and effectively with them in practice.



**OUR INNOVATIVE
RANGE IS
COMPLEMENTED
BY FREE, INDUSTRY
LEADING TRAINING.**

Industry Leading Training	3
CPD Training Workshops	4
Bronchoscopy in Critical Care Workshop	5
Lung Isolation Workshop	6
Managing the Difficult Airway Workshop	7
Modular Training Sessions	8
Combined Modular Training Sessions	9
Introduction to aScope™ 4 Cysto Modular Session	10



INDUSTRY LEADING TRAINING

We're dedicated to improving patient safety, and so recognise the importance of providing education for our users.

We work with you to implement recommendations from industry bodies by scheduling regular training on our products as well as the latest techniques in cystoscopies, difficult airway management, upper airway examination, bronchoscopy and single-lung ventilation.

Training is delivered through a range of interactive and immersive workshops, each in accordance with guidelines from the National Institute for Health and Care Excellence, Association of Anaesthetists, Difficult Airway Society and Intensive Care Society, and many are approved by the CPD Accreditation Service.

Our team of Clinical Educators are dedicated to ensuring you get the most from your training. Whether it's a pre-set programme for an entire department or a bespoke session for a small group, they'll work around you to arrange a course that suits.

"Continuing Professional Development helps individuals to regularly focus on how they can become a more competent and effective professional ... and provides an opportunity for an individual to identify knowledge gaps and to resolve these in a recognisable approach to improvement."

The CPD Certification Service, 2020²



"Personal and professional development helps manage your own learning and growth throughout your career... and keeps your skills and knowledge up to date and ensures you practice safely and legally."

Health Careers, 2020¹

"CPD ensures that you and your knowledge stay relevant and up to date. You are more aware of the changing trends and directions in your profession. The pace of change is probably faster than it's ever been - and this is a feature of the new normal that we live and work in. If you stand still you will get left behind, as the currency of your knowledge and skills becomes out-dated."

Continued Professional Development, 2014³

CPD TRAINING WORKSHOPS

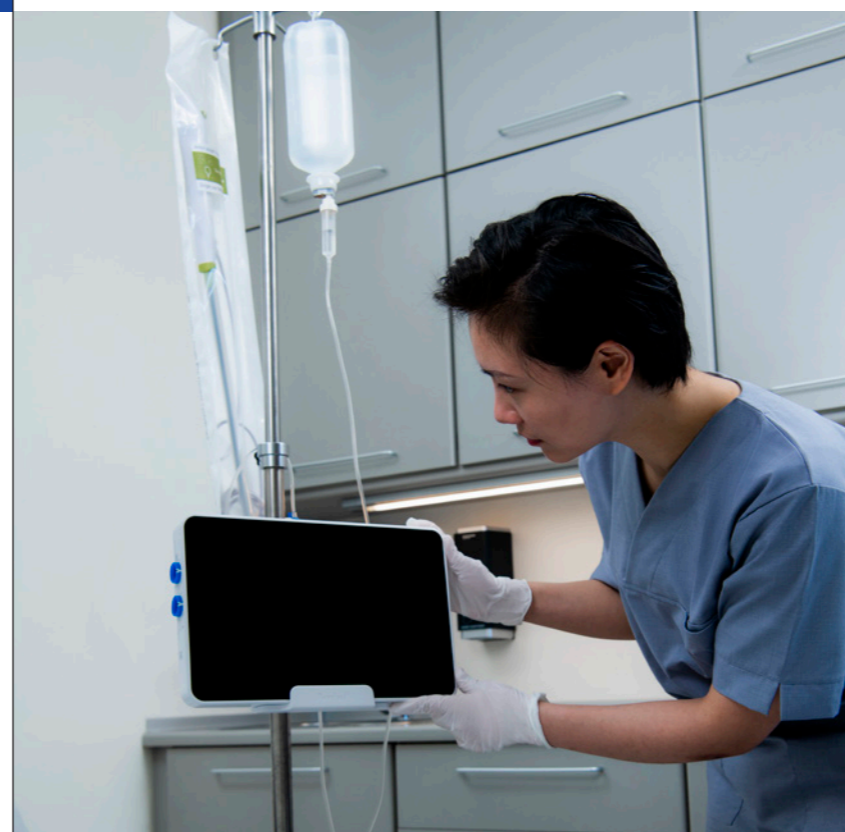
Our CPD workshops offer an ideal balance of theory and hands-on practical exercises and allow attendees to improve and broaden their knowledge and skills whilst earning CPD points. And being independently approved by The CPD Accreditation Service, you can be assured that we'll provide a reliable and structured approach to your learning. Workshops are held over a full or half-day depending on the course and can be arranged at a time and location that suits you. Afterwards, attendees will receive a certificate of completion and CPD points.



FOR SHORT MODULAR TRAINING TURN TO PAGE 7

Sessions include

- Managing the Difficult Airway
- Bronchoscopy in the ICU
- Lung Isolation



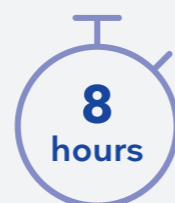
BRONCHOSCOPY IN CRITICAL CARE WORKSHOP

Learning outcomes

- Identify anatomical differences between the lungs and name all lobes and segments
- Identify diagnostic and therapeutic procedures for flexible bronchoscopy in ICU
- Identify environmental, human and patient factors to consider before performing bronchoscopies in ICU
- Understand respiratory, cardiovascular and patientspecific physiological changes during bronchoscopy
- Understand key features of Ambu bronchoscopy solutions
- Differentiate between bronchoalveolar lavage (BAL), bronchial lavage (BL) and bronchial wash (BW), and identify indications for each
- Understand traditional sampling methods and the Ambu aScope BronchoSampler solution
- Understand clinical indications, contraindications and cautions when performing bedside percutaneous dilatational tracheostomy (PDT) insertion
- Identify the advantages of direct visualisation during PDT insertion



- Understand the role of flexible bronchoscopy and airway assessment during blocked or dislodged tracheal tube incidents
- Understand foreign body retrieval using bronchoscopy, including common presentations and working tool choice
- Understand best practice regarding airway management in ICU and algorithms from the DAS guidelines
- Understand current decontamination guidelines and contamination risks associated with reusable scopes
- Gain insight into the true costs of reusable scopes



Duration



CPD points awarded

**CPD
CERTIFIED**
The CPD Certification Service

LUNG ISOLATION WORKSHOP

Learning outcomes

- Understand the broad uses for lung ventilation
- Differentiate between single/one lung ventilation (SLV/OLV) and independent lung ventilation (ILV)
- Identify procedures where lung isolation is required and the two methods of performing lung isolation
- Recall tracheobronchial anatomy and comprehend how differences affect device choice for SLV
- Understand the advantages and disadvantages of using double lumen tubes (DLTs) and endobronchial blockers (EBBs)
- Identify why IDLTs are more commonly used than rDLTs



- Understand cautions to consider including pressure injuries, tube migration and tube size selection
- Understand the importance and best techniques for visualising airways during lung isolation procedures, including the advantages of continuous visualisation
- Understand key features of VivaSight 2, including the single lumen tube (SLT), DLT and EBB
- Understand current decontamination guidelines and contamination risks associated with reusable scopes
- Gain insight into the true costs of reusable scopes



Duration



CPD points awarded

**CPD
CERTIFIED**
The CPD Certification Service

**CONTACT US TO BOOK
YOUR TRAINING**

01480 498 403

ukca-clinicaleducation@ambu.com

MANAGING THE DIFFICULT AIRWAY WORKSHOP

Learning outcomes

- Be familiar with upper airway anatomy including the nasopharynx, oropharynx, laryngopharynx and larynx
- Define an unexpected difficult airway
- Identify clinical and human factors relating to difficult airways
- Understand algorithms from the DAS guidelines
- Specify when awake flexible scope intubation may be appropriate and which products to use
- Understand key features of Ambu difficult airway management solutions
- Understand current decontamination guidelines and contamination risks associated with reusable scopes
- Gain insight into the true costs of reusable scopes
- Gain insight into and identify key findings from NAP4, NCEPOD and Ambu NICE guidance



Duration



CPD points awarded

MODULAR TRAINING SESSIONS

Combine modular training sessions to gain multiple CPD Points!

Sessions include

Pulmonology

- The DAS Guidelines and Unexpected Difficult Airway with aScope
- Percutaneous Dilational Tracheostomy Insertion (PDT) with aScope
- Technical and Non-Technical Skills with aScope
- Single Lung Isolation (SLV) with aScope
- Single Lung Isolation (SLV) with VivaSight 2
- Video Laryngoscopy with King Vision
- Bronchoalveolar Lavage (BAL) and Bronchial Washing (BW) with aScope and Broncho Sampler
- Published Clinical Case Examples and Current Best Practice Recommendations*

ENT

- Nasoendoscopy and The Use of Tools with aScope RhinoLaryngo
- Upper Airway Examination with aScope*
- Introduction to Nasoendoscopy for Speech and Language Therapists with aScope RhinoLaryngo*

Urology

- Introduction To aScope™ 4 Cysto

Continuing professional development is important, however we understand how finding the time for training can be difficult. That's why we're able to offer you shorter modular sessions that can fit more easily into busy working schedules.

These sessions last for one hour and contain a mixture of theory and hands-on practical exercises. They can be arranged at a time and location that suits you, and can even award you with CPD points and certification.



Duration



CONTACT US TO BOOK YOUR TRAINING

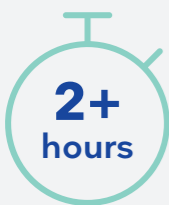
01480 498 403

ukca-clinicaleducation@ambu.com

* Not currently CPD accredited discuss with your Clinical Educator

COMBINED MODULAR TRAINING SESSIONS

Modular training sessions can be combined and delivered as ‘mini-workshops’ to cover several training topics and award multiple CPD points in a single session.



Duration



CPD points awarded

Bespoke Training Sessions

If there’s a specific area you’d like to focus on that isn’t covered by our workshops and modular sessions, our team of Clinical Educators can work with you to develop a bespoke program tailored to your needs. Telephone us on 01480 498 403 or email us at ukca-clinicaleducation@ambu.com to talk to us about your requirements.



Support After Your Training

Once you’ve finished your training, we continue to support you to ensure your ongoing confidence and safe practice with our products. From local product assistance and further education opportunities through to providing clinical evidence and budget analyses, we’re here to help you every step of the way.



INTRODUCTION TO aScope™ 4 CYSTO MODULAR SESSION

This modular session offers the perfect chance to learn more about cystoscopy and the benefits of using single-use equipment. It combines practical and theoretical elements and offers hands on training using the aScope 4 Cysto.

The session also covers the anatomy of the lower urinary tract, the indications for flexible scoping, and current nice guidelines and where single-use equipment would fall into these guidelines.

Learning outcomes

- Gain a familiarity with key anatomical functions and landmarks of the urinary system, specifically lower tract
- Understands the clinical indications and uses for cystoscopy, identify procedures and possible complications.
- Understands the Bladder Cancer Pathway & where the aScope 4 Cystoscope fits into this pathway
- Understand key features of the aScope 4 Cysto and aView™ 2 Advance displaying unit
- Understand the role of a single use system
- Gain insight into and identify key findings from multiple studies surrounding the aScope™ 4 Cysto



Duration



CPD points awarded on completion



Ambu Limited

Incubator 2, Alconbury Weald Enterprise Campus
Alconbury Weald
Cambridgeshire
PE28 4XA | United Kingdom

ukca-clinicaleducation@ambu.com
ambu.co.uk