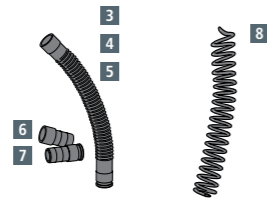
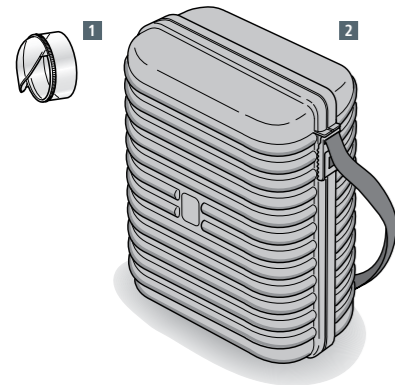
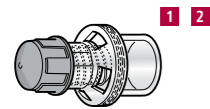


Ambu® Mark IV Resuscitator

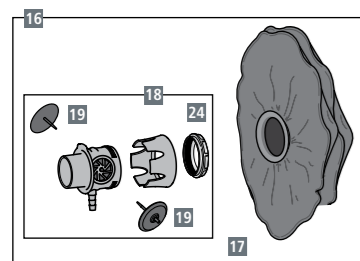
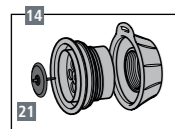
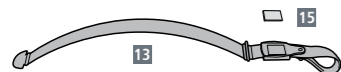
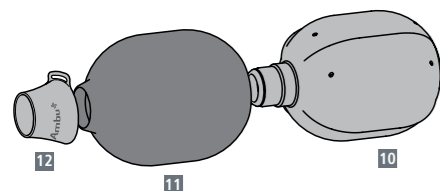
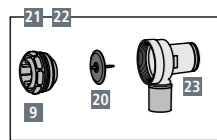
ACCESSORIES

	CAT. NO.
1 PEEP valve 10	A000 137 000
2 PEEP valve 20, for adult	A000 213 000



SPARE PARTS

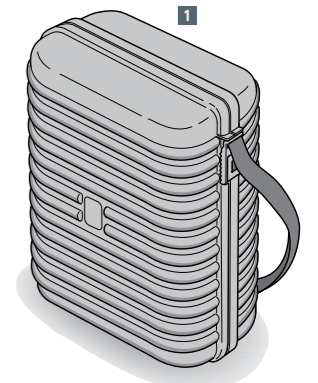
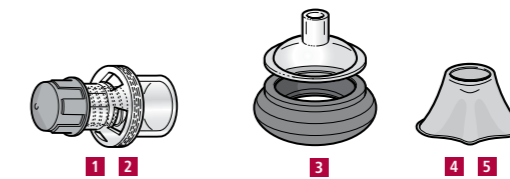
	CAT. NO.
1 Splash guard (optional)	245 000 707
2 Ambu Pack with transparent lid	A230 000 001
3 Extension tube, 305 mm	209 000 701
4 Extension tube, 915 mm	209 000 702
5 Extension tube, 1068 mm	209 000 703
6 Tube adapter, 28/32 mm	209 000 506
7 Tube adapter, 24 mm female for extension tube	209 000 507
8 Spiral hose for O ₂ Reservoir, EPDM rubber	209 000 508
9 Expiratory connector	245 000 511
10 Ambu Mark IV inner bag	304 000 501
11 Ambu Mark IV outer cover	304 000 502
12 Ambu Mark IV connector, complete	304 000 503
13 Ambu Mark IV strap with name plate	304 000 504
14 Ambu Mark IV inlet valve, complete	304 000 505
15 Name plate	304 000 506
16 Oxygen reservoir bag, complete	304 000 507
17 Oxygen reservoir bag	304 000 508
18 Oxygen reservoir bag housing	304 000 509
19 Valve disc for oxygen reservoir bag	245 000 514
20 Valve disc for single shutter patient valve and inlet valve	245 000 509
21 Single shutter patient valve, complete	295 000 501
22 Single shutter patient valve, complete with splash guard	295 000 502
23 Single shutter patient valve housing	295 000 503
24 Serrated nut for O ₂ reservoir (adult)	245 000 517



Ambu® Mark IV Baby Resuscitator

ACCESSORIES

	CAT. NO.
1 PEEP 10 valve	A000 137 000
2 PEEP 20 valve	A000 213 000
3 Transparent silicone face mask, size 0A	000 313 000
4 Rendell-Baker face mask, size 0	000 070 000
5 Rendell-Baker face mask, size 1	000 069 000



SPARE PARTS

	CAT. NO.
1 Ambu Pack with transparent lid	A230 000 001
2 Spiral hose for O ₂ reservoir	209 000 508
3 Ambu Mark IV Baby inner bag	299 000 501
4 Ambu Mark IV Baby outer cover	299 000 502
5 Ambu Mark IV Baby connector, complete	299 000 503
6 Ambu Mark IV Baby strap with name plate	299 000 504
7 Ambu Mark IV Baby inlet valve, complete	299 000 505
8 Name plate	304 000 506
9 Valve disc for inlet valve	245 000 509
10 Oxygen reservoir bag with adapter	299 000 506
11 Adapter for oxygen reservoir bag	299 000 507
12 Oxygen reservoir	304 000 508
13 Oxygen reservoir housing	304 000 509
14 Valve disc for oxygen reservoir bag	245 000 514
15 Single shutter patient valve baby, complete	299 000 508
16 Override cap	299 000 509
17 Single shutter patient valve housing, baby	299 000 510
18 Valve disc for single shutter valve	288 000 506
19 Cap for manometer port	288 000 509
20 O ₂ reservoir tube, 250 mm	288 000 510
21 Expiratory connector	299 000 512
22 Serrated nut for O ₂ reservoir (adult)	245 000 517

